



Automobile from dealer in good condition is valued at

Rs. 3,50,575 - Rs. 3,72,260

Hyundai I20 2014 MAGNA (O) 1.4 CRDI



A 55,000

2014

Vehicle Price in All Conditions



FAIR

Rs.3,41,811 - Rs.3,62,954



VERY GOOD

Rs.3,59,340 - Rs.3,81,566



EXCELLENT

Rs.3,68,103 - Rs.3,90,873

Vehicle Details

| | |
|-----------|--------------------|
| Make | Hyundai |
| Model | I20 |
| Year | 2014 |
| Trim | MAGNA (O) 1.4 CRDI |
| KM Driven | 55,000 kms |
| City | Gurgaon |
| Owner | One |
| Accident | None |
| Color | White |

Advanced Evaluation Conditions

GOOD

Transmission, Suspension, Steering, Frame, Engine, Electrical, Car Interior, Car Exterior, Brakes, AC

Disclaimer

The Orange Book Value or any pricing or valuation mentioned in the report is an indicative pricing, generated based on proprietary patented methodology of Droom and/or its affiliates/partners/subsidiaries. The actual price of the vehicle/ mobile device may vary based on actual condition of the vehicle/ mobile device and several other parameters. Droom cannot be held responsible for any losses incurred or liabilities arising by the party relying on this report.





New Vehicle
Price Now

NA



New Vehicle
Price Then

Rs. 7,40,674



Total Cost of
Ownership

Rs. 6,08,464



What Others
Paid

Rs. 4,50,000

Next 3 Year Depreciation of Vehicle

Estimated Buying Price From Dealer

2021



Rs.3,09,646

2022



Rs.2,96,369

2023



Rs.2,64,523

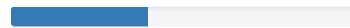
Estimated Selling Price To Dealer

2021



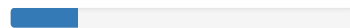
Rs.2,78,676

2022



Rs.2,66,727

2023



Rs.2,38,067

Ratings & Reviews

Hari ☆☆☆☆☆

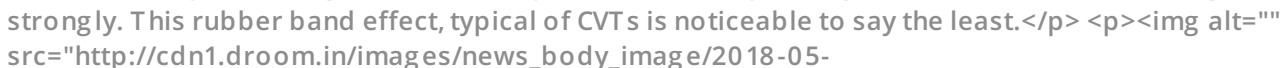
Introduction

In the beginning of this year, [Hyundai](https://www.droomdiscovery.com/new-cars/hyundai) Launched the facelifted i20 at the Auto Expo. Prior to this, the car was only available with a 1.4-litre petrol motor and come paired to a four-speed automatic. Other options included a 1.2-litre petrol with a five-speed manual and a 1.4-litre diesel with a six-speed box. But, this facelifted model has brought with it the discontinuation of the 100hp 1.4-litre petrol motor. The hatchback still comes with the 1.2-litre petrol but this time around it gets a CVT automatic box. It is available in two variants – Magna Executive and Asta - priced at Rs 7.04 lakh and 8.16 lakh.

Sadly, the CVT is not available on the top-of-the-line Asta (O). This means, you will have to miss out on a few features to get the automatic box. The previous 1.4-litre car was available at Rs 8.97 lakh, which makes it considerably more than the outgoing models. Other features include ABS, DRLs, and touchscreen infotainment and climate control.

How does it drive?

CVTs have always been known for their smooth drive and it is no different in the [new i20](https://www.droomdiscovery.com/new-cars/hyundai-elite-i20). The petrol motor delivers a good amount of power and the gears shift smoothly. The car takes off the line quickly. The gears shifts at part and medium throttle are almost unnoticeable. Additionally, the engine is smooth making the car very nice to drive in the city. But, things are drastically different when you step on the accelerator. The engine builds speed strongly. This rubber band effect, typical of CVTs is noticeable to say the least.



This means you will have to plan your

Disclaimer

The Orange Book Value or any pricing or valuation mentioned in the report is an indicative pricing, generated based on proprietary patented methodology of Droom and/or its affiliates/partners/subsidiaries. The actual price of the vehicle/ mobile device may vary based on actual condition of the vehicle/ mobile device and several other parameters. Droom cannot be held responsible for any losses incurred or liabilities arising by the party relying on this report.



overtakes in advance and helping you in this scenario is the manual mode. When you slide the car into the manual mode, it makes things better for overtaking. The car offers a good mid-range punch and keeping it higher in the rev range offers better acceleration. However if you get too high in the rev range the car makes a loud noise without any actual gain in performance.

The suspension on this hatchback does absorb low speed bumps well. The ride is silent and even though it is a soft setup, the i20 doesn't move around a lot. At higher speeds though, it pitches quite a bit and doesn't feel stable. The steering on the car is also light which further decreases its highway ability.



src="http://cdn1.droom.in/images/news_body_image/2018-05-

29/6a089cddfd7b380257885db4c0433af0_extra_large.jpg " />

Should I buy one?

Hyundai is undoubtedly looking to bring in more customers with the addition of this new CVT variant. But, in order to keep the price down, the i20 loses out on some bits from the top-end Asta (O) variant that can only be had with a manual gearbox. Some of the features consist of side and curtain airbags, Isofix child seat points and a lot more. That said, the CVT model isn't badly equipped and it gets all the necessities. The Hyundai i20 CVT's pricing of Rs 7.04 lakh (Magna Executive) and Rs 8.16 lakh (Asta) slightly undercuts the cars in direct competition, like the Maruti Baleno CVT (Rs 7.10-8.41 lakh) and the Honda Jazz (Rs 7.71-8.47 lakh) (all prices, ex-showroom, Delhi). Which is why, if you are in the market for a city-friendly car – the i20 CVT would be a good option. However, for highway journeys, you would be better off with the manual variant.

 31

 6

02 Dec 2019

Disclaimer

The Orange Book Value or any pricing or valuation mentioned in the report is an indicative pricing, generated based on proprietary patented methodology of Droom and/ or its affiliates/partners/subsidiaries. The actual price of the vehicle/ mobile device may vary based on actual condition of the vehicle/ mobile device and several other parameters. Droom cannot be held responsible for any losses incurred or liabilities arising by the party relying on this report.



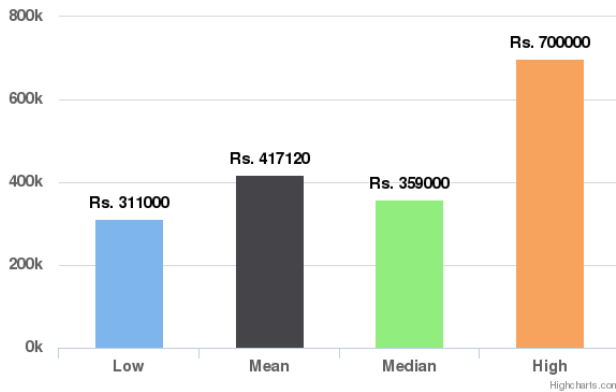
<https://orangebookvalue.com>

- a service by **droom**.in



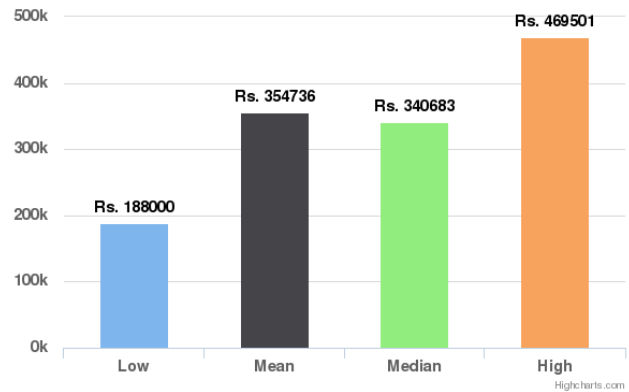
Similar Listings for Past 60 Days

Similar Listings for Past 60 days



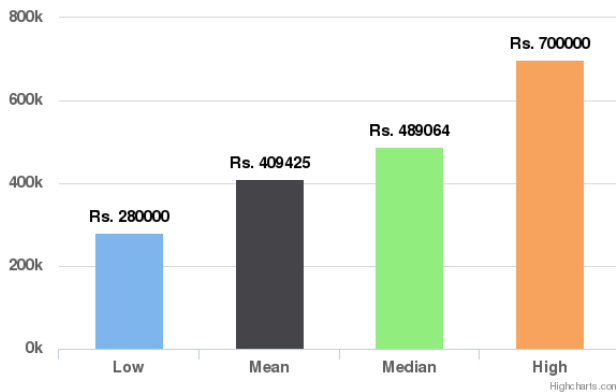
Similar Orders for Past 60 Days

Similar Orders for Past 60 days



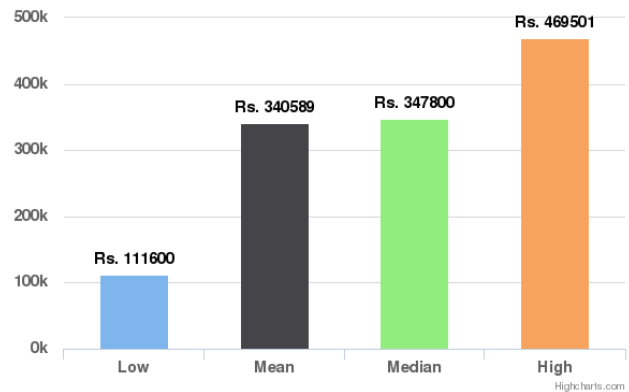
Similar Listings for Past 90 Days

Similar Listings for Past 90 days



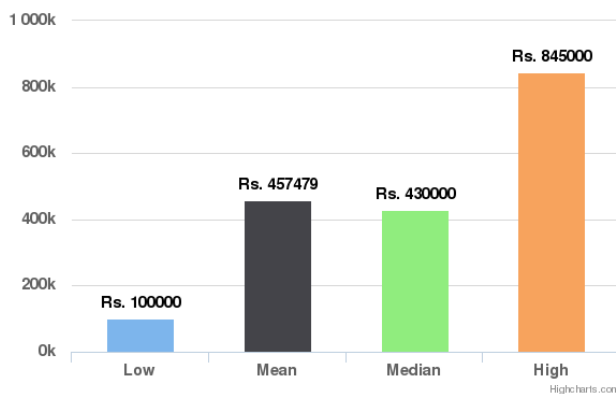
Similar Orders for Past 90 Days

Similar Orders for Past 90 days



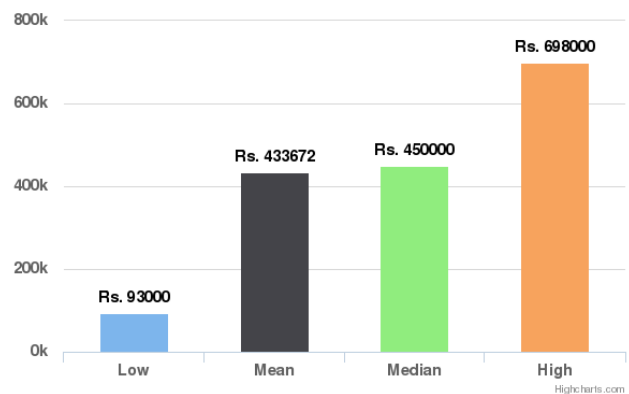
Similar Listings for Lifetime

Similar Listings for Lifetime



Similar Orders for Lifetime

Similar Orders for Lifetime



Disclaimer

The Orange Book Value or any pricing or valuation mentioned in the report is an indicative pricing, generated based on proprietary patented methodology of Droom and/or its affiliates/partners/subsidiaries. The actual price of the vehicle/ mobile device may vary based on actual condition of the vehicle/ mobile device and several other parameters. Droom cannot be held responsible for any losses incurred or liabilities arising by the party relying on this report.



Component Health Check

A vehicle undergoes enormous wear and tear with time. It is often imperative to inspect and replace parts of the vehicle on a timely basis to keep it in prime condition. These aspects often go unnoticed and become real pain points with time. Use the Component Health Check for maintaining your vehicle components without any hassles. It would provide the list of parts to be inspected every subsequent year based on their age to help you find out the parts needing replacement.



*This is a suggestive list and is not based on the actual physical inspection of this vehicle

Disclaimer

The Orange Book Value or any pricing or valuation mentioned in the report is an indicative pricing, generated based on proprietary patented methodology of Droom and/ or its affiliates/partners/subsidiaries. The actual price of the vehicle/ mobile device may vary based on actual condition of the vehicle/ mobile device and several other parameters. Droom cannot be held responsible for any losses incurred or liabilities arising by the party relying on this report.



<https://orangebookvalue.com>

- a service by **droom**.in

Glossary

New Vehicle Price Now: This provides the current On-Road Price of a new vehicle of the same Make-Model-Trim

New Vehicle Price Then: This provides the On-Road Price of the vehicle at the time it was purchased in brand new condition.

Total Cost of Ownership: This provides the total cost of owning this vehicle which includes the cost of running this vehicle and its maintenance cost over the next 5 years

What Others Paid: This provides an estimated value of the price paid by others for a similar used vehicle. However, the final valuation provided might vary based on the city, condition of the car and many other factors.

Next 3 Year Depreciation of the Vehicle: This provides an estimated price that your used vehicle would fetch or an estimated price that you would have to pay for a similar vehicle over the next 3 years.

Similar Listings for Past 60 days/Past 90 days/Lifetime: This provides some data points regarding similar vehicles that have been listed on Droom in the respective duration. Low and High provide the Lowest and the Highest Values Quoted for similar vehicles whereas Mean and Median indicate the average and median values.

Similar Orders for Past 60 days/Past 90 days/Lifetime: This provides some data points regarding similar vehicles that have been sold on Droom in the respective duration. Low and High provide the Lowest and the Highest Values at which similar vehicles have been sold whereas Mean and Median indicate the average and median values.

Component Health Check: This provides a list of parts that are advised to be inspected every subsequent year based on their age. This would help you find out the parts needing maintenance/replacement.

Disclaimer

The Orange Book Value or any pricing or valuation mentioned in the report is an indicative pricing, generated based on proprietary patented methodology of Droom and/ or its affiliates/partners/subsidiaries. The actual price of the vehicle/ mobile device may vary based on actual condition of the vehicle/ mobile device and several other parameters. Droom cannot be held responsible for any losses incurred or liabilities arising by the party relying on this report.



<https://orangebookvalue.com>